



GURUGRAM GLOBAL COLLEGE OF PHARMACY GURUGRAM

Approved by AICTE, Govt. Of India & Pharmacy Council of India
Affiliated to Pt. B.D Sharma University of Health Science Rohtak
Affiliated to Haryana Board of Technical Education

7.1.2

Geo-tagged photographs of the facilities

INDEX

S. No.	Document	Page No.
1.	Geotagged Photographs of Solar Panel	3
2.	Photograph Of LED In GGCP Campus	4
3.	Photograph Showing Different Coloured Dustbins Used For Segregation Of Solid Waste	5
4.	Rain Water Harvesting System	6
5.	Geo Tagged Photograph For Green Campus	7
6.	Geo Tagged Photograph of Ramp With Railing	9
7.	Photographs of Stairs In The Campus	10
8.	Photographs of Corridors	11
9.	Photographs of Wheel Chair	12
10.	Photograph Of Disabled Free Washroom In The Campus	12



Alternate Sources of Energy and Energy Conservation Measures

The college has installed solar panels on its rooftops to harness solar energy for powering electrical appliances and lighting systems.

Geo tagged photographs of Solar Plant on the roof top





Photograph of LED in GGCP Campus



Segregation of Solid Waste

At GGCP, waste management is handled meticulously through a color-coded dustbin system. Waste is initially sorted into different color-coded bins, each designated for specific types of waste, such as recyclables, bio-degradable waste, and general refuse. Following this initial sorting, the segregation process is further refined by the Municipal Corporation (MCD), which manages the collection and processing of waste to ensure effective recycling and disposal. This systematic approach not only promotes environmental sustainability but also enhances the efficiency of waste management practices within the college.

Photograph Showing different coloured dustbins used for Segregation of Solid Waste



- Green Dustbin : Biodegradable
- Blue Dustbin: Non-Biodegradable recyclable
- Red Dustbin: Non-Biodegradable Non-recyclable
- Yellow Dustbin: Infectious Waste



Water Conservation

WATER CONSERVATION INITIATIVES

At Gurugram Global College of Pharmacy (GGCP), we recognize that "Water is the single most precious thing on earth." Water is essential for economic and social development, and it plays a critical role in maintaining the integrity of the natural environment. It is also vital for soil and plant life. Despite being a renewable natural resource, continually replenished through nature's hydrological cycle, the total amount of water on earth remains constant.

GGCP is committed to the proactive conservation of available groundwater resources and the harvesting of rainwater to recharge groundwater and maintain the water table.

The growth in the student population and modernization of washrooms have increased the demand for high-quality water, impacting water resources. Although GGCP has never faced a water shortage, we understand the importance of maintaining our water resources and have implemented rainwater harvesting technology to manage this effectively.

Rain Water Harvesting System



GEO TAGGED PHOTOGRAPH FOR GREEN CAMPUS



Plantation Drive



Disabled Friendly Barrier free Environment

Facilities:

The Institute is committed to provided disabled friendly barrier free environment for the disabled persons in the college. In the same regards the following facilities are being provided in the campus.

1. Ramps

Institute is having ramps to provide wheelchair access to enter. There is the preference of exterior locations for ramps to avoid occupying indoor space. Ramp is having railing for providing support to disabled Students.

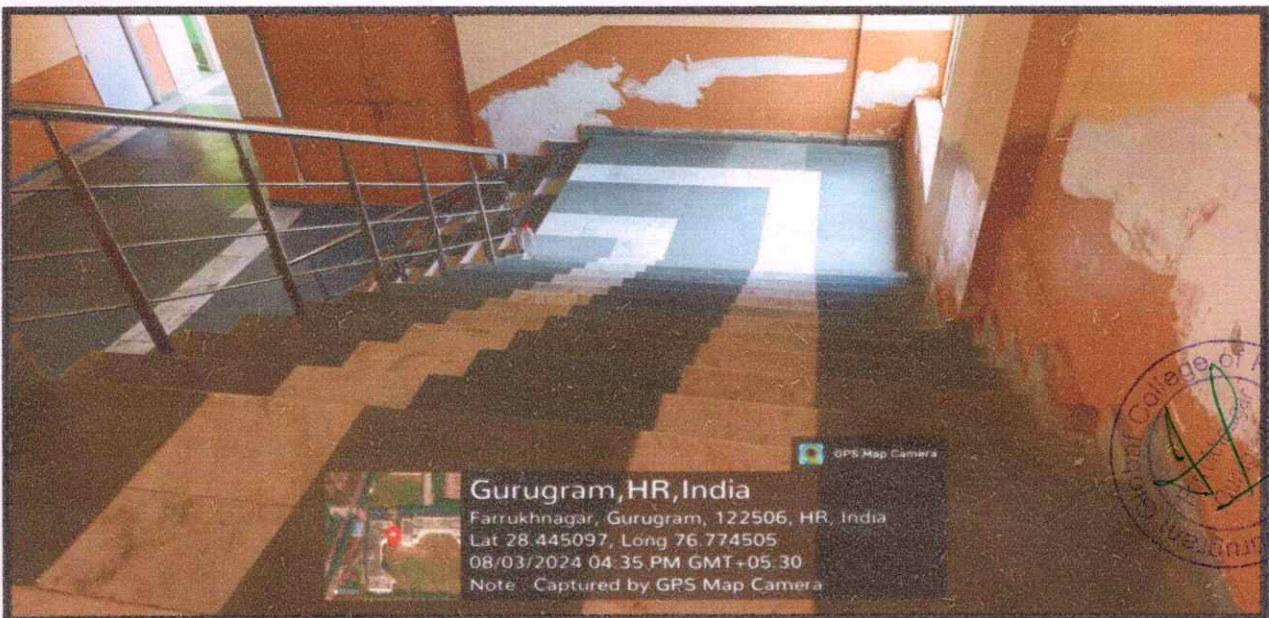
Geo tagged Photograph of Ramp with Railing



2. Accessible Stairs:

Design of the stairs is having careful consideration for the safety of individuals with mobility issues and visual impairments. Steps in a flight are consistent and uniform. It provides landings of at least 1.20 m length after every 15 steps for resting. The Institute ensures staircases are well-lit and have non-slip surfaces to prevent accidents and falls.

Photographs of stairs in the campus



3. Accessible Corridors

GGCP ensures corridors are wide enough and unobstructed to facilitate easy passage, especially for wheelchair users. The preferred width is such that it allows two wheelchairs to pass.

Photograph of Corridors



4. Wheel Chair

Institute is providing wheel chair facility for disabled student for free movement throughout the campus.

Photograph of Wheel Chair in the campus



5. Disabled Friendly Washroom: GGCP has the disabled friendly washroom for providing support to the needy students.

Photograph of disabled free washroom in the campus

